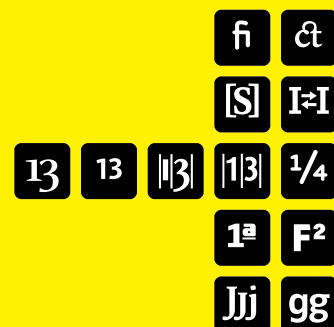


FONTFONT OPENTYPE®



FONTFONT INFO GUIDE

FF Scala Sans OT Black FF Scala Sans Pro Black

VERSION 01 | February 2007



SECTIONS

- A | Introduction to OpenType®
- B | Font and Designer Information
- C | Supported Layout Features
- D | Language Support
- E | Type Specimens

SECTION A

INTRODUCTION TO OPENTYPE®

WHAT IS OPENTYPE?

OpenType® is a cross-platform font file format developed jointly by Adobe and Microsoft. The two main benefits of the OpenType format are its cross-platform compatibility (the same font file works on Macintosh and Windows computers), and its ability to support widely expanded character sets and layout features, which provide rich linguistic support and advanced typographic control.

OpenType fonts can be installed and used alongside PostScript® Type 1 and TrueType fonts.

The range of supported layout features may differ in the various FontFont OpenType packages, therefore each OpenType package will be accompanied by this FF Info Guide listing the layout features supported by this specific font package.

You'll find a glossary of all available OpenType layout features in Section B of the general FF OpenType User Guide.

Please see the FontFont OpenType® User Guide
at <http://www.fontfont.com/opentype>

©FS1, 2005 All rights reserved.
All information in this document is provided "AS IS" without
warranty of any kind, either expressed or implied, and is subject
to change without notice.

All trademarks mentioned in this document are the trademarks
or registered trademarks of their respective holders.

You may reproduce and distribute this document as long as you
do not remove FS1's copyright information and do not make any
changes in the document.

Handgloves

ABOUT FF SCALA SANS OT BLACK

Martin Majoor has enhanced his elegant serif FF Scala with a companion sans-serif family. Again it is the simplicity that makes Scala Sans so captivating, while at the same time its distinct character is immediately recognizable. First, the family comprised six variants including an italic small caps style, a fairly rare beast in the typographic zoo. Later, FF Scala Sans 2 included two Condensed weights as well as the two missing Small Caps fonts. Now, more than ever, the Scala family has been suitable for complex book typography. The package also includes a bonus font, FF Scala Hands, 81 pointing hands with and without serifs, right and left handed, feminine and masculine, thumbs up and thumbs down ... the list goes on. The third package, FF Scala Sans™ 3 includes new light and black weights. With these additions, FF Scala Sans™ is ready for the world of advertising.

ABOUT MARTIN MAJOOR

Martin Majoor has been designing type since the mid-1980s. After a student placement at URW in Hamburg, he started in 1986 as a typographic designer in the Research & Development department at Océ-Netherlands. There he carried out research into screen typography and worked on the production of digital typefaces for laser printers.

In 1988 he started working as a graphic designer for the Vredenburg Music Centre in Utrecht, for whom he designed the typeface Scala for use in their printed matter. Two years later FSI FontShop International published FF Scala™ as the first serious text face in the then-new FontFont-Library. In 1993 FF Scala™ was augmented with a sans-serif version, FF Scala Sans™, which was also released by FSI. In the eyes of the designer the sans and the serif versions complement each other admirably. They follow the same principle of form but are two distinct designs. The second largest newspaper in Holland (Algemeen Dagblad) uses both FF Scala™ and FF Scala Sans™ for text and headlines and is a good example of how the two families can work together.

In 1994 Majoor started working on the design of the Dutch telephone directory, for which he did both the typography and, more importantly, created a new typeface. The face is called Telefont and comes in two weights: Telefont List and Telefont Text. The Dutch phone company PTT Telekom holds exclusive rights to both fonts. Perhaps as a reaction to the very formal work on the phone books, Majoor designed FF Scala Jewels™ in 1997, a quartet of classic decorative typefaces based on the capitals of FF Scala™ Bold.

FONTFONT OPENTYPE®

EXAMPLES



STYLISTIC SET 1



STANDARD LIGATURES



DISCRETIONARY LIGATURES



CASE-SENSITIVE FORMS



CAPITAL SPACING



OLDSTYLE FIGURES



LINING FIGURES



PROPORTIONAL FIGURES



EXAMPLES

|1|3|

TABULAR FIGURES

167 ▶ 167
167 ▶ 167

1/4

FRACTIONS

1/2 ▶ ½

1^a

ORDINALS

1a20 ▶ 1^a2^o

F²

SUPERSCRIPT

m3 ▶ m³

Jj

ACCESS ALL ALTERNATES

1 ▶ ¹

gg

STYLISTIC ALTERNATES

◊ ○ ☆ ▶ ◆ ● ☆

SECTION D

LANGUAGE
SUPPORT

SUPPORTED
CODE PAGES
OPENTYPE STANDARD



MACOS
MACOS ROMAN
IBM
IBM-37 UNITED STATES - EBCDIC (IBM-28709)
IBM-273 GERMANY - EBCDIC
IBM-277 DENMARK, NORWAY - EBCDIC
IBM-278 FINLAND, SWEDEN - EBCDIC
IBM-280 ITALY - EBCDIC
IBM-282
IBM-284 SPAIN, LATIN AMERICA - EBCDIC

IBM-285 UNITED KINGDOM - EBCDIC
IBM-297 FRANCE - EBCDIC
IBM-500 INTERNATIONAL - EBCDIC
IBM-871 ICELAND - EBCDIC
IBM-1047 OPEN SYSTEMS - EBCDIC

WINDOWS
MS WINDOWS 1252 LATIN 1
ISO
ISO 8859- 1 W EU LATIN 1

ADDITIONAL
SUPPORTED
CODE PAGES
OPENTYPE PRO



MACOS
MACOS CENTRAL EUROPE
IBM
IBM-921 BALTIC
IBM-1112 BALTIC - EBCDIC
WINDOWS
MS WINDOWS 1250 EASTERN EUROPEAN

MS WINDOWS 1254 TURKISH
MS WINDOWS 1257 BALTIC
ISO
ISO 8859- 2 C EU LATIN 2
ISO 8859- 3 TU, MALT, GAL, ESP LATIN 3
ISO 8859- 9 W EU+TURKISH LATIN 5
ISO 8859-10 SCANDINAVIAN LATIN 6

**SUPPORTED
LANGUAGES
OPENTYPE STANDARD**

STD

BRETON
CATALAN
DANISH
DUTCH
ENGLISH
FINNISH
FRENCH
GERMAN
ICELANDIC

IRISH
ITALIAN
NORWEGIAN
PORTUGUESE
RHAETO-ROMANCE
SERBIAN
SPANISH
SWEDISH

**ADDITIONAL
SUPPORTED
LANGUAGES
OPENTYPE PRO**

PRO

CROATIAN
CZECH
ESPERANTO
ESTONIAN
GALICIAN
HUNGARIAN
KURDISH
LATVIAN (LETTISH)
LITHUANIAN
MALTESE

MOLDAVIAN
POLISH
ROMANIAN
SLOVAK
SLOVENIAN
SORBIAN LOWER
SORBIAN UPPER
TURKISH

SUPPORTED
UNICODE RANGES

TITLE

NUMBER
OF CHARACTERS
OT
PRO

EXAMPLES

BASIC LATIN

97

97

! " # ... | } ~

LATIN-1 SUPPLEMENT

96

96

ı ç £ ... ý þ ÿ

LATIN EXTENDED-A

10

103

Ā ā Ă ... ẓ Ž ž

LATIN EXTENDED-B

1

6

ƒ Š š Ţ ţ Ĳ

SPACING MODIFIER LETTERS

8

8

ˆ ˇ ˘ ... ˜ ˝

GREEK AND COPTIC

4

4

Δ Ω μ π

GENERAL PUNCTUATION

16

16

— — ‘ ... ‹ › ⁄

CURRENCY SYMBOLS

1

1

€

LETTERLIKE SYMBOLS

4

4

ℓ ™ Ω e

MATHEMATICAL OPERATORS

18

18

∂ ∅ Δ ... ≤ ≥ .

GEOMETRIC SHAPES

9

9

■ □ ▲ ... ◆ ◇ ○

DINGBATS

3

3

✦ ☆ ★

ALPHABETIC PRESENTATION FORMS 2

2

fi fl

Shag pile i13

AaBbCcDdEeFfGgHhIiJjKkLl

abcdefghijklmnopqrstuvwxyz 0123456789

ABCDEFGHIJKLMNOPQRSTUVWXYZ

FF Scala Sans OT Black 14/16 pt

Sempre domenica prenderà vita una giornata Gut getarnt im Neptungras steht ein Kuckuckslipp. Serán, a juicio de los cientí.cos, tres épocas Onks tää vika kysymys. Hän on

FF Scala Sans OT Black 12/14 pt

Sempre domenica prenderà vita una giornata Gut getarnt im Neptungras steht ein Kuckuckslipp. Serán, a juicio de los cientí.cos, tres épocas Onks tää vika kysymys. Hän on työskennellyt Il y aurait

FF Scala Sans OT Black 10/12 pt

Sempre domenica prenderà vita una giornata Gut getarnt im Neptungras steht ein Kuckuckslipp. Serán, a juicio de los cientí.cos, tres épocas Onks tää vika	kysymys. Hän on työskennellyt Il y aurait bien de choses à dire là-dessus. Several tenors sing in culturally void display. Eigentlich wollen die Leute nur die Sonne
--	---

FF Scala Sans OT Black 8/10 pt

Sempre domenica prenderà vita una giornata Gut getarnt im Neptungras steht ein Kuckuckslipp. Serán, a juicio de	los cientí.cos, tres épocas Onks tää vika kysymys. Hän on työskennellyt Il y aurait bien de choses à dire là-dessus. Several	tenors sing in culturally void display. Eigentlich wollen die Leute nur die Sonne genießen. Ayer, todavía en pleno echazo,
--	---	---